



Prime Lee's Summit Development Ground

291 Highway & Stuart Road (NEC), Lee's Summit, MO



SALE PRICE: \$3,500,000 | 19 +/- ACRES

DEMOGRAPHICS

	1 mile	3 miles	5 miles
Estimated Population	114	41,803	94,911
Avg. Household Income	\$111,694	\$128,143	\$134,725

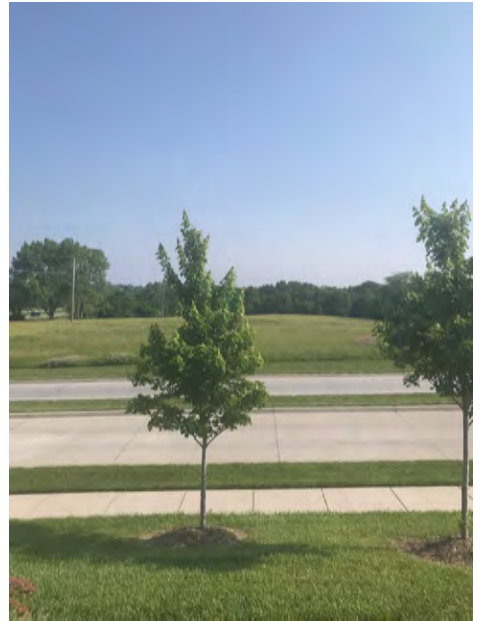
- 19 acres of prime Lee's Summit, MO development ground for sale
- All utilities to site
- Great visibility to 33,400 cars per day on 291 Highway
- Near several approved new commercial and residential developments
- [View More Photos](#)

 [CLICK HERE TO VIEW MORE LISTING INFORMATION](#)

For More Information Contact: *Exclusive Agent*
BOB JAEKEL | 816.412.7365 | bjael@blockandco.com



PHOTOS



DRONE PHOTOS



Looking North



Looking East

DRONE PHOTOS

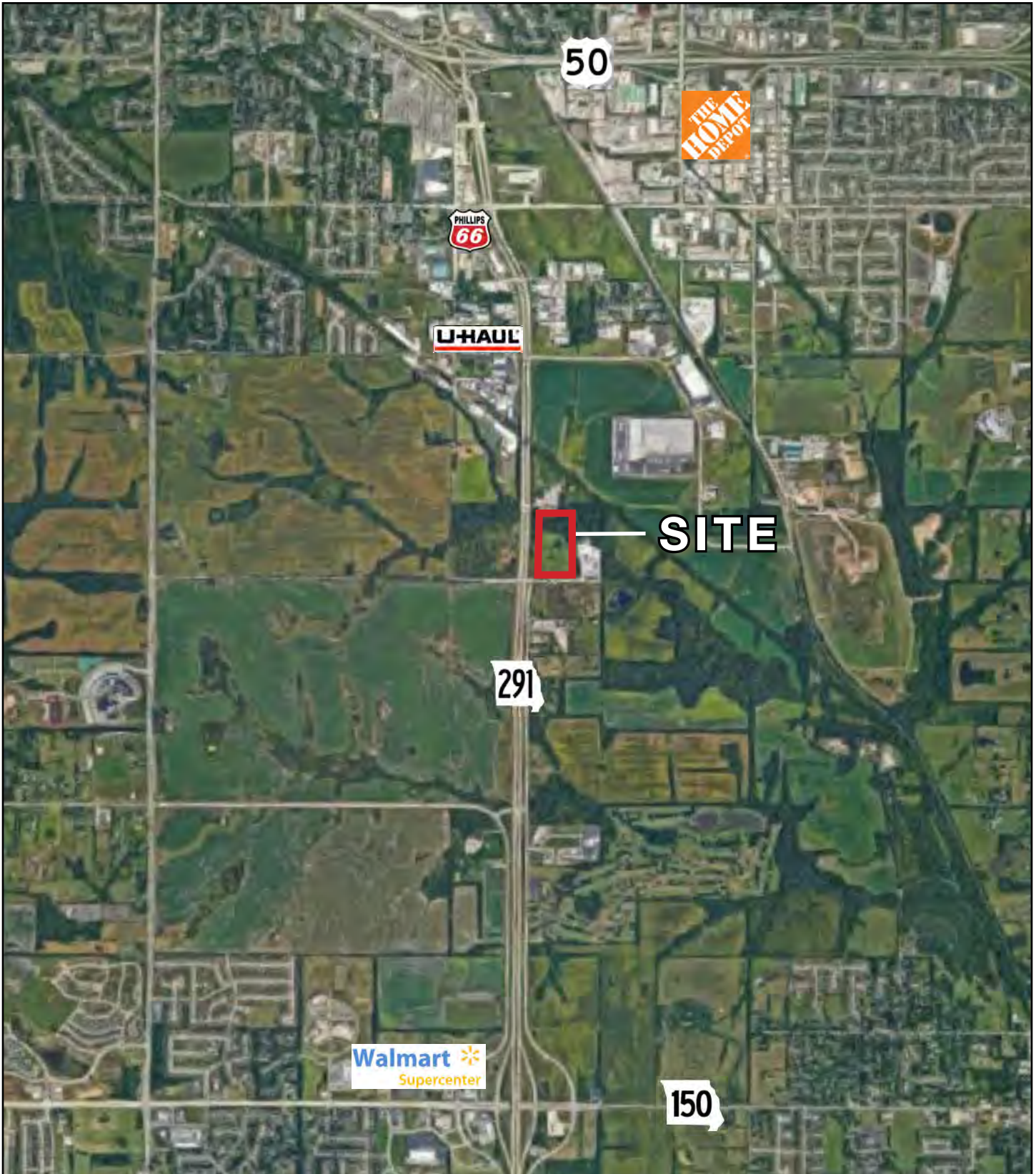


Looking South



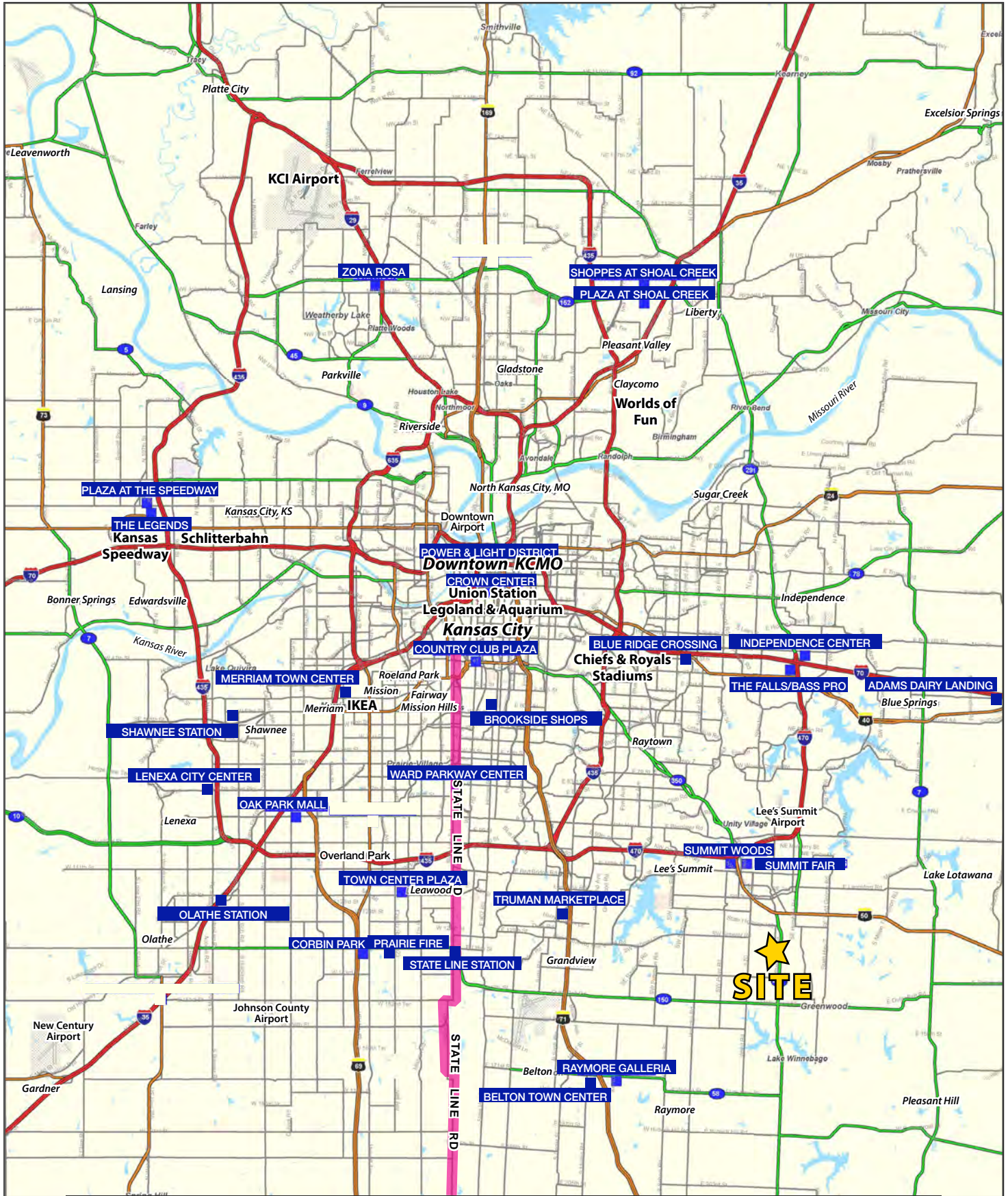
Looking West

AERIAL



Prime Lee's Summit Development Ground

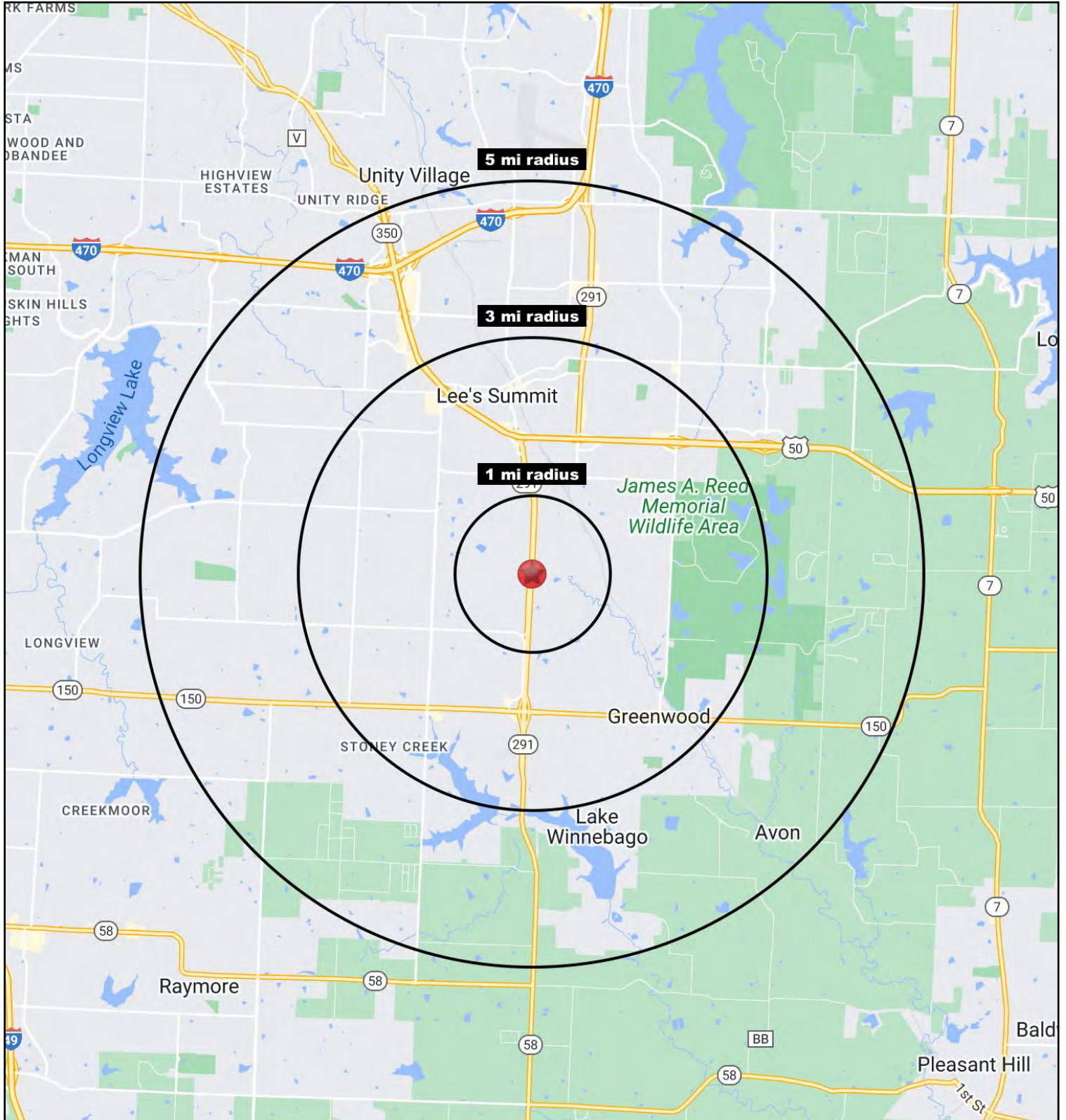
291 Highway & Stuart Road (NEC), Lee's Summit, MO





Prime Lee's Summit Development Ground

291 Highway & Stuart Road (NEC), Lee's Summit, MO





Prime Lee's Summit Development Ground

291 Highway & Stuart Road (NEC), Lee's Summit, MO

291 Highway & Stuart Rd Lee's Summit, MO 64082	1 mi radius	3 mi radius	5 mi radius
Population			
2023 Estimated Population	114	41,803	94,911
2028 Projected Population	126	46,091	101,253
2020 Census Population	148	40,686	93,502
2010 Census Population	142	38,229	84,439
Projected Annual Growth 2023 to 2028	2.1%	2.1%	1.3%
Historical Annual Growth 2010 to 2023	-1.5%	0.7%	1.0%
2023 Median Age	34.8	37.3	38.3
Households			
2023 Estimated Households	45	16,151	36,340
2028 Projected Households	48	17,586	38,491
2020 Census Households	56	15,594	35,381
2010 Census Households	52	14,416	31,693
Projected Annual Growth 2023 to 2028	1.5%	1.8%	1.2%
Historical Annual Growth 2010 to 2023	-1.0%	0.9%	1.1%
Race and Ethnicity			
2023 Estimated White	75.1%	79.6%	79.6%
2023 Estimated Black or African American	13.5%	11.4%	11.1%
2023 Estimated Asian or Pacific Islander	3.0%	1.9%	2.2%
2023 Estimated American Indian or Native Alaskan	0.3%	0.2%	0.2%
2023 Estimated Other Races	8.0%	6.9%	7.0%
2023 Estimated Hispanic	5.7%	5.5%	5.5%
Income			
2023 Estimated Average Household Income	\$111,694	\$128,143	\$134,725
2023 Estimated Median Household Income	\$107,781	\$98,489	\$103,160
2023 Estimated Per Capita Income	\$43,894	\$49,533	\$51,614
Education (Age 25+)			
2023 Estimated Elementary (Grade Level 0 to 8)	0.3%	1.4%	1.4%
2023 Estimated Some High School (Grade Level 9 to 11)	0.9%	2.2%	2.3%
2023 Estimated High School Graduate	25.6%	21.5%	20.1%
2023 Estimated Some College	23.6%	22.9%	20.8%
2023 Estimated Associates Degree Only	7.4%	10.8%	9.6%
2023 Estimated Bachelors Degree Only	24.1%	25.8%	28.7%
2023 Estimated Graduate Degree	18.2%	15.3%	17.0%
Business			
2023 Estimated Total Businesses	141	1,879	3,456
2023 Estimated Total Employees	1,732	14,653	31,978
2023 Estimated Employee Population per Business	12.3	7.8	9.3
2023 Estimated Residential Population per Business	-	22.2	27.5

©2023. Sites USA. Chandler, Arizona. 480-491-1112 Demographic Source: Applied Geographic Solutions 4/2023. TIGER Geographv - RS1

